

S7 compact

50-120 HP Ø max. 7 cm [2.8 inch]

Flail mulcher in a compact design with side shift

Its innovative frame makes it the perfect mulcher for vineyards and orchards. S7 compact is the right model for anyone who needs a compact central rear mulcher with hydraulic displacement. The linear side shift reaches very close to the tractor and ensures stable guidance.

The flails and the counter cutters are made of hardened steel and work perfectly together when mulching grass, brushwood and prunings with a diameter of up to 7 cm. The counter cutters can be replaced for a consistently clean cutting performance, and the wear plates under the chassis can also be replaced after long, demanding use.

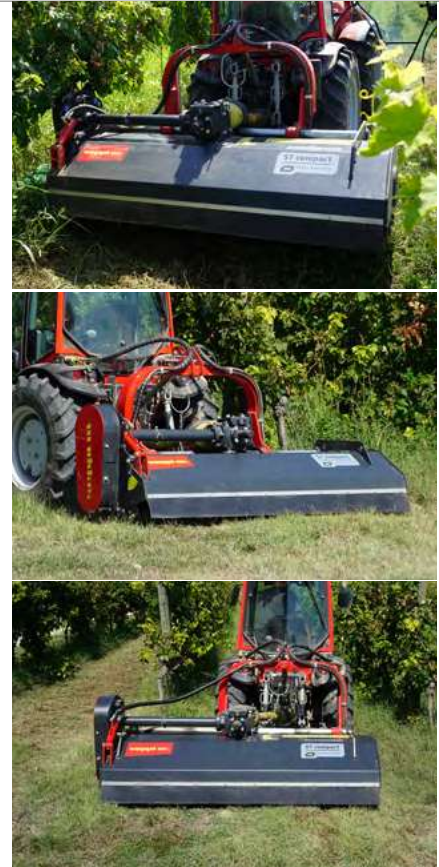
This model is ideal for maintaining the undercanopy areas. With the optional 2FAST quick coupling system, you can connect various accessories to this mulcher.

Standard version and characteristics

- > Mulches grass and brush up to 7 cm [2.8"]Ø
- > Working speed 3-10 km/h
- > 3 point rear linkage cat. 1&2
- > Linear hydraulic side shift
- > Gearbox with freewheel and through shaft
≤200: 540 rpm, ≥225: 1000 rpm
- > Belt transmission
- > Front protection with metal flaps and chains
- > Support roller, adjustable in height
- > Standard rotor with flails
≤200: SMO, ≥225: SMW
- > 2 rows of replaceable tempered counter cutters

Optional configuration and accessories

- > Rotor with Y flails
- > 540 or 1000 rpm gearbox
- > Front protection with chains & chains
- > Rubber gauge wheels instead of roller
- > Adjustable rear hood M-FLAP
- > Hydraulic adjustable rear hood
- > Attachments for undercanopy maintenance (details see separate brochure)



[YouTube www.youtube.com/seppimulcher](https://www.youtube.com/seppimulcher)

Tools

SMO SMW

flails



Y knives



Specifications • S7 compact

		150 [59]	175 [69]	200 [79]	225 [89]
Working width	cm [inch]	150 [59]	175 [69]	200 [79]	225 [89]
Overall width	cm [inch]	166 [65]	191 [75]	216 [85]	241 [95]
Depth	cm [inch]	110 [43]	110 [43]	110 [43]	110 [43]
Height	cm [inch]	115 [45]	115 [45]	115 [45]	115 [45]
Weight (base value)	kg [lb]	630 [1,390]	680 [1,500]	730 [1,610]	820 [1,810]
Belts	qty	4	4	4	4
Flails	qty	SMO 15	SMO 18	SMO 21	SMW 24
Y flails	qty	27	33	39	45
Nominal tractor power	HP	50-100	50-100	50-100	80-120

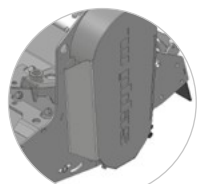
S7 compact · Features

Strong and robust chassis made of high-tensile steel, with replaceable wear plates.

S420

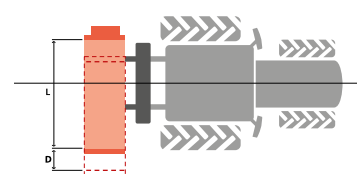
WEARPLATE

Plant protection:
The plants brush against the deflector without getting trapped

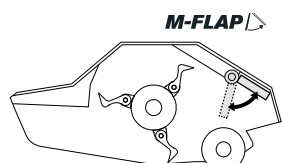


Belt Protections:
Robust version, corresponds to the forestry machine design

Linear hydraulic side shift

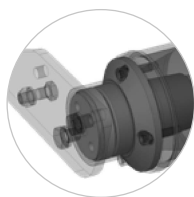
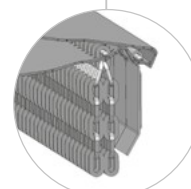


L	D
150	33 cm [13"]
175	55 cm [22"]
200-225	68 cm [27"]

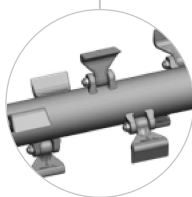


Optional adjustable hood
under the rear chassis
to set the degree of mulching,
mechanical or hydraulic version

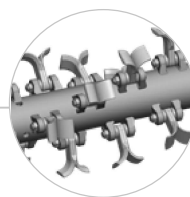
Combined protection:
The guards tilt and move the chains,
creating a barrier that prevents the material
from getting jammed inside the chains;
the chains protect against stone ejection



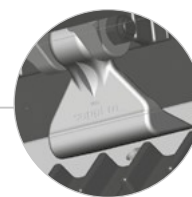
Adjustable support roller,
Reinforced bearing and roller



Standard rotor
with SMW/SMO flails



Optional rotor
with Y flails



Replaceable tempered
counter cutters inside the
chassis provide a perfect
result when mulching.



Low power consumption at maximum throughput with
HELIX ROTOR technology

